

# COLD

## intolerance?

**Amputations, Crush Injuries,  
Poor Circulation, Nerve Damage,  
and other illnesses**

## the solution!

Reliable, Portable,  
Controllable Heat Sources

**Heated Glove Liners,  
Socks and other garments**

Comforting Heat  
for up to 12 hours or more

Customized for  
Amputation or Single Hand

**simple  
abilities**

Keeping your clients  
warm and working



## **Amputations, crush injuries, poor circulation, nerve damage, and a number of illnesses can all spell COLD INTOLERANCE**

As you well know, cold can be a big problem for many individuals and in particular, for workers attempting to return to work or stay on the job after sustaining injuries or following the onset of certain diseases.

In many cases this goes beyond discomfort and is painfully debilitating. The solution is reliable, portable and controllable heat sources that still allow the freedom of movement and dexterity to do the job.

Simple Abilities specializes in a full range of garments braces and wraps that are combined with portable rechargeable battery systems. These systems will provide comforting pain relieving heat for 6 to 12 or more hours depending on heat setting and ambient temperature.



## **Amputation or single hand — we can assist**

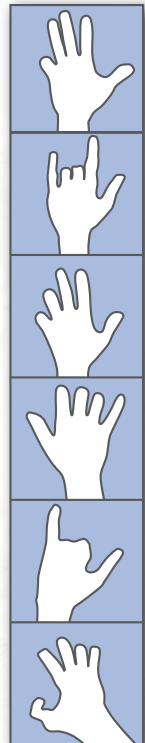
Simple Abilities supplies solutions for left, right or both hands as well as custom glove liners for clients with full or partial finger amputations.

With very few exceptions most workers will only injure one hand but gloves typically come in pairs. Rather than having a pair (right and left) of expensive heated glove liners one of which is redundant, Simple Abilities supplies a pair of heated liners, both for the same injured hand — one to wear, the other as a back-up or for use on laundry day.

With amputations — whether it's a fingertip, a whole finger or more — cold intolerance is often a major challenge. Simple Abilities will create a customized liner to fit the injured hand or what's left of it.

Simple Abilities hand weaves the micro heating wires into each garment and is able to focus extra heat to the fingers or areas of the hand that are most sensitive.

Matching protective outer work gloves are also included.



## Food processing workers

The technology that Simple Abilities has developed to enable a return to work for workers in some environments can now be used in food processing, and meets all **FOODSAFE** requirements.

- **Complex Regional Pain Syndrome (CRPS)**
- **Repetitive Strain Injury**
- **Cold-induced Fatigue**
- **Nerve Damage**
- **Lacerations**

Spending a full work shift making repetitive or similar knife cuts in a cool or cold environment is a leading contributor to all of the above debilitating conditions.

Without compromising the safety and food handling equipment already in use by workers, and without impacting the mobility and tactility of the worker, Simple Abilities has developed a method of incorporating a heating system into the cut-resistant Kevlar liners that are commonly worn in the industry. Heat and cut protection that can be combined for use in the harsh and demanding environment found in these types of workplaces has not been available until now.



## Job-specific outer work gloves

We cannot forget that heated glove liners are “liners” and need the protection of an outer glove to protect and keep the liner clean. More importantly, the outer gloves keep the heat in.

Before selecting the outer glove, we want to speak with the client to determine type of work and the dexterity and tactility required.

Simple Abilities has access to hundreds of glove styles from a number of quality manufacturers. Regular work gloves, mechanics gloves, welding gloves, anti-vibration gloves, and all sorts of specialty gloves can be customized to fit the injured hand. Custom mitts are also available.



## Reliability is critical

As you can appreciate, cowboys, welders, workers in sawmills, in food processing plants on construction sites and in dozens of other workplaces can be hard on equipment and clothing. Simple Abilities can supply replacement components for the ones that wear out or get broken. In most cases, the heated liners and heating components are still working and it's the tough outer gloves that are worn out. The message is simple: our products are reliable, they work, and workers are staying on the job. We have clients from Vancouver Island to Newfoundland, points in the U.S., deep sea divers in Finland, and an electrical lineman working in Antarctica.

## We pride ourselves in being easy to work with

We know that therapists and other clinicians are busy, and the last thing you need is a product or service provider that has a cumbersome process. Simple Abilities makes it very simple. Call us toll free at 1-877-470-1700, fax us at 604-271-2606, or email us at [corporate@simpleabilities.com](mailto:corporate@simpleabilities.com).

All we will need is:

- Basic description of client need
- Your name and contact info
- Client name, contact info and claim number
- Funding provider and contact info

Depending on your preference, you can provide us with any of the additional details we will need or we will contact the client directly. We will want to know the type of job, work environment and the length of typical work shifts.

For gloves, please go to our website at [www.simpleabilities.com](http://www.simpleabilities.com) and select "referral form" — please answer all the questions on the form, as well as provide a hand outline and measurements according to the instructions.

Other simple measurements will be needed before we make other custom garments such as heated sleeves, socks or heated wraps for wrists, elbows, shoulders, knees, thighs or back wraps. We also give you the option of providing that information or connecting us with the client.

Simple Abilities will then prepare a formal quote to be sent to the funding provider or whoever you indicate. Once the quote is approved, we initiate a "Best Fit" service using Express Post to ship sample size products for the client to try on to see what fits best. A prepaid return envelope is included for the client to get back to us.

Many of the therapists we deal with on an ongoing basis send us one fax or email and we take it from there. Others prefer to keep in the loop and that's okay too.



#186 - 8120 No. 2 Road, Suite #722  
Richmond, BC V7C 5J8  
phone 604-271-1700  
fax 604-271-2606  
toll-free 1-877-470-1700  
email [corporate@simpleabilities.com](mailto:corporate@simpleabilities.com)  
[www.simpleabilities.com](http://www.simpleabilities.com)